

Alternative 3



Three Pre-manufactured Trusses

Three equal spans at 150' with a total bridge length of 450' with a small MSE retaining wall on East bridge approach.

Estimated Bridge Cost: \$970,000

Benefits of Concrete Bridges

1. **Cost-savings** -- From reduced initial construction costs to lower maintenance costs, structures built with concrete are economical.
2. **Durability** -- Bridges built with high performance concrete (HPC) can have a service life of 100 years. They easily withstand extreme temperature changes and corrosive chemicals in a variety of conditions.
3. **Competitiveness** -- the value of concrete is repeatedly recognized in competitive bidding situations.
4. **Aesthetics** -- Dynamic, graceful, long-span bridges often become symbols of a city's (Ozaukee County) hope for the future, even a tourist attraction, and, ultimately, encourage economic development

Ozaukee Interurban Trail & Bridge Ridgewood Road to Terminal Road

Public Informational Meeting No. 1

September 22, 2005

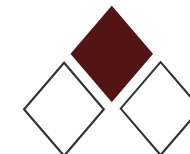
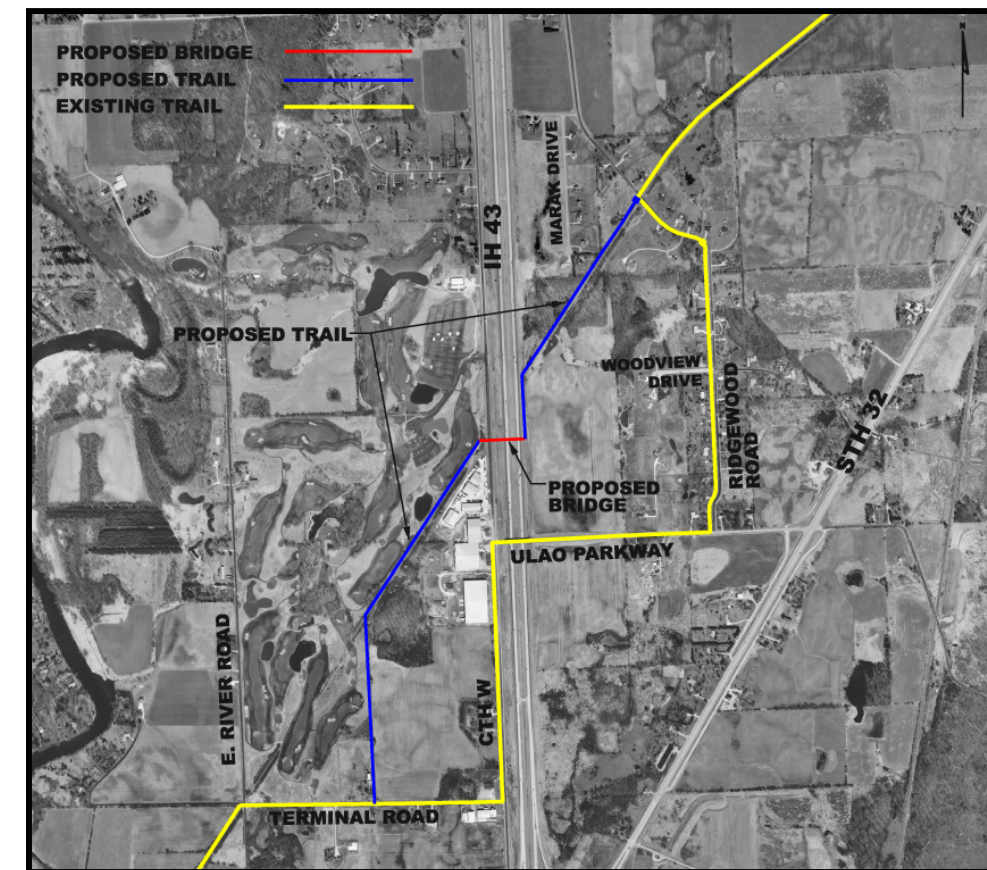
5:00 – 7:00 PM

Held At

MEE-KWON Park Golf Course

6333 West Bonniwell Road

Mequon, WI



BLOOM
CONSULTANTS, LLC
Engineers Planners Scientists



Meeting Overview

This Public Informational Meeting is being conducted as an Open House Forum to provide you with information regarding the scope of work for this project. It is also being conducted to receive input from you on the three bridge structure alternatives.

The purpose of the project is to replace approximately 2 miles of on-road trail with 1.3 miles of off-road trail and construct a pedestrian/bicycle bridge over Interstate 43 and County Highway W in the Town of Grafton. The trail will be extended from Ridgewood Road, where the current off-road trail changes to on-road, southwest across Interstate 43 and County Highway W and then south to Terminal Road.

The trail will be constructed along the former railroad right-of-way owned by WE Energies and WisDOT and along an easement purchased by Ozaukee County. Please see location map on front cover for details. The trail will be constructed with asphalt and will be ten feet wide with two foot gravel shoulders on each

Comment Form

A comment form is provided with this handout for you to provide written comments. You may leave your comments with us or you may mail them prior to September 27, 2005 to provide input to the project at this stage.

Project Schedule

The following is a tentative project schedule:

Public Information Meeting #1	September 22, 2005
Final Structure Selection By Ozaukee County	October 4, 2005
Preliminary Plans & Structure Survey Report	October 20, 2005
Public Information Meeting #2	November 2005
Final Construction Documents	April 2006
Open Bids for Construction	May 2006
Construction	June – December 2006

Contact Information

For information on the proposed project you may contact:

Andrew Struck
Ozaukee County
Planning, Resources,
and Land Management Dept
121 West Main St
P.O. Box 994
Port Washington, WI 53074
Telephone: (262)-238-8275
Fax: (262)-238-8278
astruck@co.ozaukee.wi.us

Yakov (Yan) Nenaydykh
Senior Project Manager
Bloom Consultants, LLC
10001 Innovation Drive
Suite 200
Milwaukee, WI 53226
Telephone: (414)-771-3390
Fax: (414)-771-4490
yenenaydykh@bloomconsultants.com

Structure Alternatives

The following are three possible structure alternatives for review and comment. A brief description and cost estimate is included with each rendering.

Alternative 1



Post-Tensioned Cast-in-Place Concrete

“Snake Bridge”

Span configuration 120'+190'+120' = 430'

Plaza and MSE Retaining Wall on East Bridge Approach

Estimated Bridge Cost: \$1,015,000

Alternative 2



Post-Tensioned Cast-in-Place Concrete

“Pearl Bridge”

Span configuration 120'+190'+120' = 430'

Plaza and MSE Retaining Wall on East Bridge Approach

Estimated Bridge Cost: \$1,037,000